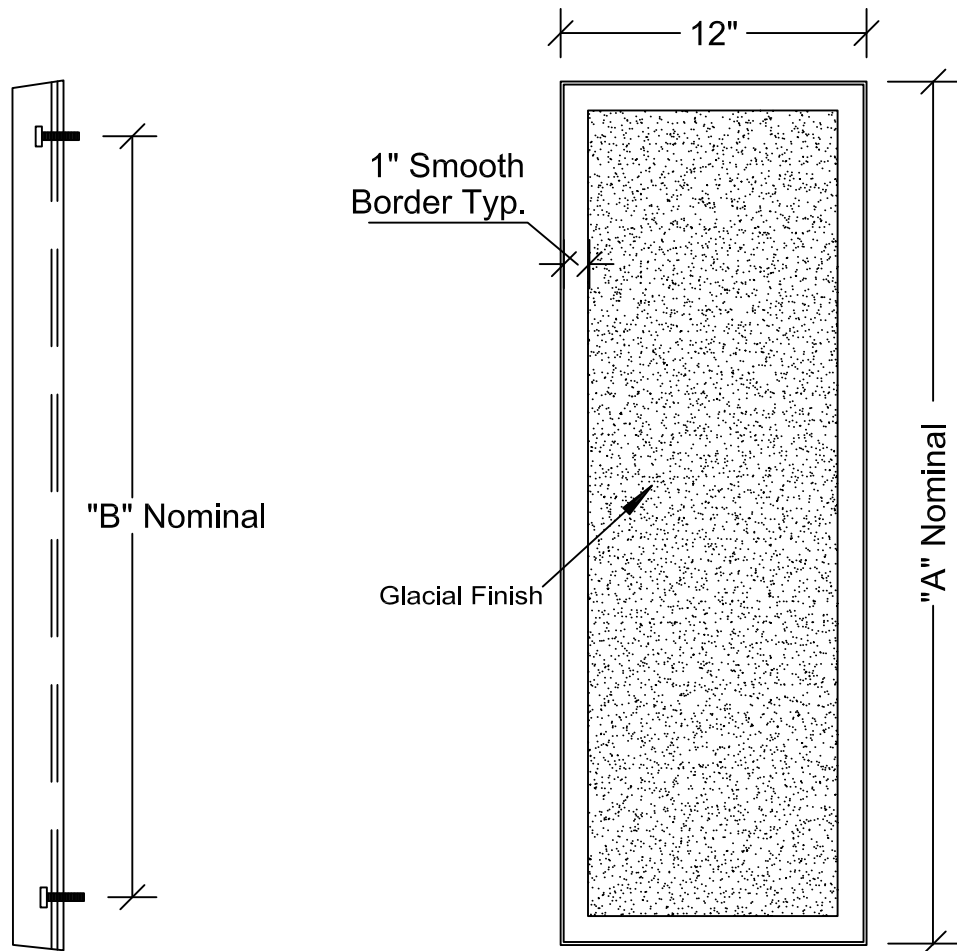
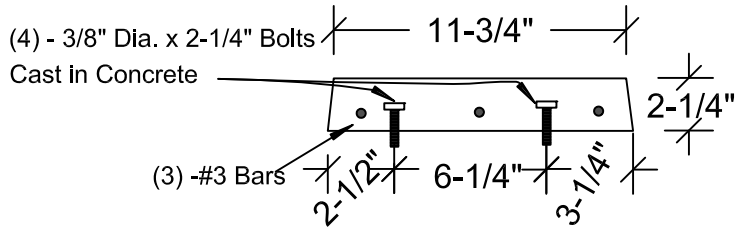


COMMERCIAL CONCRETE PRODUCTS, INC.

GLACIAL FINISH CONCRETE STAIR TREADS



PC. MK.	"A"	"B"	Wgt. (lbs.)
12 x 39-1/2"	39-3/8"	35"	92
12 x 42	42"	37-1/4"	97
12 x 44	44"	39-1/4"	101

NOT A STOCK ITEM
INQUIRE ABOUT AVAILABILITY